

Map of Cultural Facilities in Higashiosaka



1 Artistic space in Hanazono area Higashiosaka Art Museum

- 📍 6-7-22 Yoshita
- 🕒 10-min. walk from Higashi-hanazono station of Kintetsu Nara Line
- 🕒 9:00~21:00 (Closes after 17:00 if no rental room occupied)
- 💰 Free of charge (Charged during special exhibition)
- 📅 Mon. (The following day if falls on holiday) and year-end and New Year's period
- ☎ 072-964-1313



2 Science, culture and sports space for kids! "Dream 21" Higashiosaka City Children's Culture and Sports Center

- 📍 2-7-21 matsubara-minami
- 🕒 15-min. walk from Higashi-hanazono station of Kintetsu Nara Line
- 🕒 9:30~17:00 📷 Charged
- 📅 Mon. (Opens if falls on holiday), the following day of holiday (Opens if falls on Sat., Sun. and holiday) and year-end and New Year's period
- ☎ 072-962-0211



3 Literary salon in the Edo era nestled in urban area Higashiosaka City designated Cultural Property "Kyu-kawazumi-ke" (Former residence of Kawazumi family)

- 📍 7-6-39 Kusaka-cho
- 🕒 20-min. walk from Ishikiri station of Kintetsu Nara Line
- 🕒 9:30~16:30 📷 Free of charge
- 📅 Mon. (Opens if falls on holiday), the following day of holiday (Opens if falls on Sat., Sun. and holiday) and year-end and New Year's period
- ☎ 072-984-1640

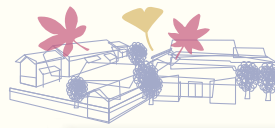


4 National Historic Site and National Important Cultural Property "Konoike-shinden-kaisho" (Farming management facility)

Currently closed

- ✳ The facility is currently closed due to seismic reinforcement. Please look forward to the reopening.
- 📍 2-30 Konoike-motomachi
- 🕒 5-min. walk from Konoike-shinden station of JR Gakken-toshi Line (Katamachi Line)
- 📅 Mon. (Opens if falls on holiday), the following day of holiday (Opens if falls on Sat., Sun. and holiday) and year-end and New Year's period
- 🕒 9:30~17:00
- 💰 Charged
- ☎ 06-6745-6409





5 OMAKEYA ZUNZO: Junzo Miyamoto's Folk Toy&Art Museum

- 📍 3F Yamasan-eito Bldg. 5-1-21 Shimo-kosaka
- 🚶 5-min. walk from Yaenosato station of Kintetsu Nara Line
- 🕒 10:00~17:00 🏷️ Charged
- 📅 Sun., Mon., bon holiday, year-end and New Year's period and facility's designated holiday
- ☎️ 06-6725-2545



6 The Institute of Amusement Industry Studies Gallery, Osaka University of Commerce

- 📍 4-1-10 Mikuriya-sakae-machi
- 🚶 5-min. walk from Kawachi-kosaka station of Kintetsu Nara Line
- 🕒 10:00~16:30 🏷️ Free of charge
- 📅 Sun., holiday and university designated holiday
- ☎️ 06-6618-4068



7 Museum of Commercial History, Osaka University of Commerce

- 📍 4-1-10 Mikuriya-sakae-machi
- 🚶 5-min. walk from Kawachi-kosaka station of Kintetsu Nara Line
- 🕒 10:00~16:30 🏷️ Free of charge
- 📅 Sun., holiday and university designated holiday
- ☎️ 06-6785-6139



8 Osaka Shoin Women's University Tanabe Seiko Museum of Literature

- 📍 4-2-26 Hishiya-nishi Library at Osaka Shoin Women's University
- 🚶 5-min. walk from Kawachi-kosaka station of Kintetsu Nara Line
- 🕒 9:00~16:30 🏷️ Free of charge
- 📅 Sun., holiday and university designated holiday
- ☎️ 06-7506-9334



9 Shiba Ryotaro Memorial Museum

- 📍 3-11-18 Shimo-kosaka
- 🚶 8-min. walk from Yaenosato station of Kintetsu Nara Line
- 🕒 10:00~17:00 🏷️ Charged
- 📅 Mon. (The following day if falls on holiday or make-up holiday)
Dec. 28-Jan. 4 and Sep. 1-10
- ☎️ 06-6726-3860



10 Higashiosaka Cultural Creation Hall

- 📍 2-3-4 Mikuriya-minami
- 🚶 5-min. walk from Yaenosato station of Kintetsu Nara Line
- 🕒 9:00~22:00
- 🏷️ Free of charge (Charged for use of halls and rooms)
- 📅 2nd Tuesday of each month (The following day if falls on holiday),
year-end and New Year's period and facility designated holiday
- ☎️ 06-4307-5772



**Cultural City Promotion Division, Cultural Affairs Office,
Human Rights and Cultural Department of Higashiosaka City**
〒577-8521 1-1-1 Aramoto-kita, Higashiosaka City
TEL: 06-4309-3155 FAX : 06-4309-3823